

Cage Bin

1100L



The mesh side panels of these 1100L recycling containers allow collection crews and users to become instantly aware of any wrongly placed waste, preventing whole loads from becoming contaminated.



Part of
Egbert Taylor

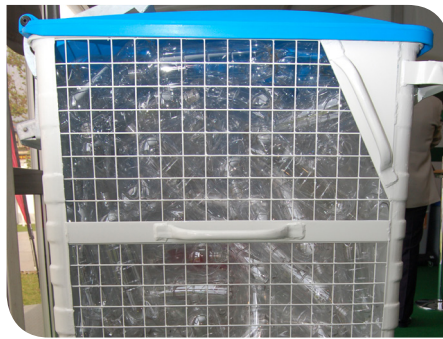
Cage Bin 1100L

The Taylor Cage Bin has been designed with preventing contamination in mind.

The cage sides are designed to allow for clear visibility of waste held inside the container.

The Continental™ 1100L Cage will give you exceptional lifetime value with limited downtime, unlike plastic and other alternative steel commercial trade bins.

Quality manufacture means Continental™ bins keep working, even under the toughest conditions.



Features

Featured as standard on all Taylor Continental™ 1100's:

- EN840 compliant
- Internally seam welded
- Hot dip galvanised body
- Welded comb bar
- Side handles
- 20mm top frame
- 2 x swivel castors & 2 x braked castors
- Roto moulded lid

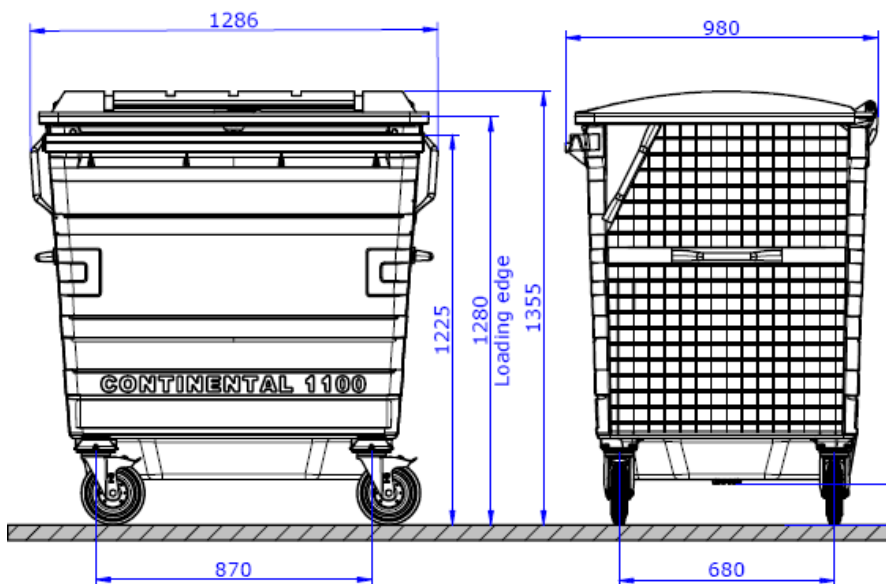
Options

- Custom embossing
- Drop front/drop back panel
- External/internal fork pockets
- Tag safe
- Towing capabilities
- Drain plug options
- Different lid types & apertures
- Variety of lid colours
- Powder coated body colour options
- Locking options
- Security solutions

Technical Details

Height: 1370mm
Width: 1286mm
Depth: 980mm

Capacity: 1100 litres
Empty Weight: 96kg
Castors: 200mm



See Bin 1100L Datasheet / UK EN

Talk to us
 +44 (0)1299 251 333

Email us
 info@egberttaylor.com

Visit us online
 www.egberttaylor.com

Egbert H. Taylor & Co Ltd, Oak Park, Ryelands Lane, Elmley Lovett, Droitwich, Worcestershire, WR9 0QZ, UK

Egbert H. Taylor & Co Ltd is a limited company registered in England and Wales. No. 00718441. Registered Office as above.