

High Capacity Station HC5

Bigbelly's HC5 is a smart, solar-powered, compacting waste or recycling station. This compacting model upto 10x more than the average 100 litre traditional waste bin and is equipped with sensors that monitor and report fullness levels and collection activity. It harvests solar power to compact waste and communicate its real-time status. The HC5's enclosed hopper (opening) design ensures total waste containment. This model maintains the durable, high quality and design integrity of all Bigbelly smart stations, and can be customized based on waste stream, options, and accessories.



Built-in Compactor



Solar Powered



Smart Station



Fullness Sensor

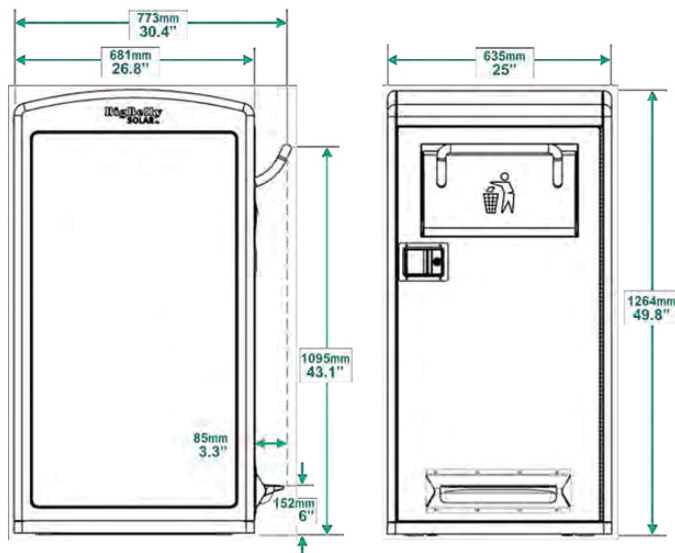


Onboard GPS



3G/4G Connection

Technical Specifications



Overall Machine Dimensions

- Height: 1264 mm
- Width: 635 mm
- Depth: 681 mm
- Handle Height (ADA Compliant): 1095 mm
- Weight: 122 kg
- Hopper Opening: 152 mm x 432 mm
- Bin Volume: 125 L
- Compacted Waste: approx 570L+ (uncompacted waste)
- Advertising space:
 - Front door - 0.64 m²
 - Rear Skin - 0.65 m²
 - Side Panels - 0.63 m²
 - Total Area - 1.94 m²

Mixed Waste Trash, Single Stream Recycling, or Compost
(Various hopper options available)



High Capacity Station Smart Solar-Powered Compacting Model (570L+)



> Technical Specifications - Continued

Safety Features

- CE approved
- Fully interlocked access doors protect users and service personnel
- Locked front door
- Separately keyed service access
- Fault-tolerant design for hopper insertion door prevents access to compaction area

Durability

- Weather resistant, UV stabilised polyester powder- coat finish on all exterior parts
- Electronic components temperature range of -40°C to +85°C
- Fully weatherised, but in the event of a flood, HC5 can withstand:
Up to 508 mm of water without harming the electronics
Up to 915 mm of water with only minor damage to electronics

Hopper Options



General Waste

Blue Recycle

Green Recycle

Materials

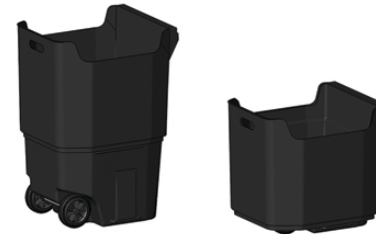
- RoHS compliant
- Galvanised sheet metal steel interior and exterior construction
- TPO (Thermoplastic polyolefin) plastic is used for the 2mm thick side panels and hopper cover. The black coloured plastic is made from 100% post-consumer recycled material. TPO plastic is impact, dent, and abrasion resistant; UV stable; and able to maintain protective performance in extreme temperatures without blistering, warping or becoming brittle. It is the same material contained in automobile bumpers.
- Interior Bin: Leak proof; made of low density polyethylene (LDPE) plastic

Power & Electronics

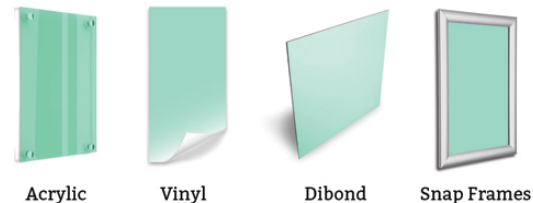
- 40 watts high energy solar panel
- PV panel protected by polycarbonate bubble
- Spill-proof, sealed maintenance-free battery
- Self-powered unit requires no wiring

Optional Extras

- Wheeled Interior Lift Bin (Bar & Comb Styles)



- Artwork & Advertising kits



- Ashtray options and Stub-out Plates



- Security System with Physical Plates



High Capacity Station (HC5) Smart Solar-Powered Compacting Model (570L+)

