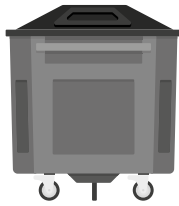
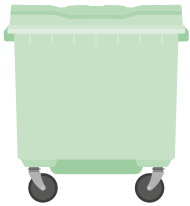
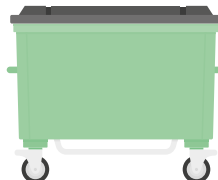
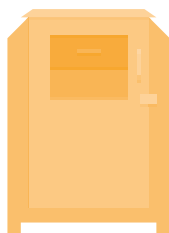
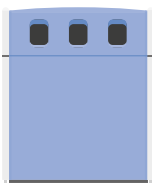
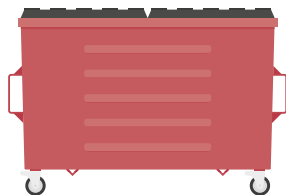
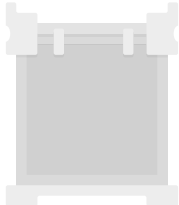
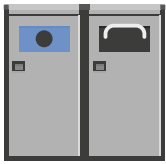


# Egbert Taylor

The Next Generation of  
**Waste Management Solutions**



## Products and Services





**Egbert Taylor is the UK's leading provider of waste management solutions, benefiting from having over 50 years' experience in manufacturing 4 wheeled metal waste containers; including the award-winning 'Continental' range! We are the only UK organisation to have a Lloyds' approved EN840 Test Facility onsite, which is why the 1.6m containers manufactured to date achieve an average life of 12 years' in service. Egbert Taylor are a strong supporter of the local area with over 90% of our raw materials, and Employees, coming from within Worcestershire area. Being a British manufacturer supporting other British businesses is something we are very proud of.**

Our 20-acre manufacturing site at Oak Park, Droitwich, continues to be our 'jewel in the crown' and is at the very core of our business. Our manufacturing facilities, partners and knowledge of the waste industry is the driving force in our ability to service our customers' needs. Egbert Taylor has been on a remarkable journey since it first opened its doors in 1962 and we look forward to continuing that journey, supporting the local community and bringing best-in-class products & services to our loyal customers.

**Brendan Murphy, CEO  
Egbert Taylor Holdings Ltd.**

**The Award Winning  
Taylor Continental™ 1100L**

# Building on the past. Shaping the future.

All our products are manufactured at our 18 Acre Oak Park site near Birmingham, England. We are certified to ISO 9001 and ISO 14001 (UKAS accredited), and a proud Investor in People for over 10 years.

We supply over 90% of all UK Local Authorities and the main private sector contractors. Operating globally, supplying the waste and recycling containment infrastructure for entire cities and countries.

Our products are designed to promote culture change and attitudes towards waste & recycling through engagement and communications. All around the world we can help change public behaviour for the better to reduce waste and help people improve recycling within their communities.

We represent the UK on the European Standards Committees for EN840, EN14803 and EN1501 and are a member of the Health & Safety Executive's Waste Industry Safety & Health (WISH) forum.

Oak Park houses one of the world's few EN840 testing facilities in its Research & Development facility, allowing us to independently re-certify our products to EN840 by UKAS accredited Lloyds British.



## Contents

02	Introduction	18	Spares & Accessories	Taylor
06	Continental™ Range	20	Solar Powered Compacting	Rigbelly
08	Global	22	Fill Level Monitoring	net bin
10	Plastic Bins	24	Access Control	net bin
12	Node° & Street II	27	Case Study	
14	Textile Bank & WasteSafe	28	Logistics	
16	Urban & Refurbishment	30	EN840 Compliance	

# Bound by heritage. Driven by innovation.

## One word, multiple meanings.

With over five decades of shaping the global waste industry, we have evolved into a forward-thinking waste solution provider representing multiple leading brands.

## Behind every heritage story is an evolutionary path.

### Our Path:

- has taken us from being a manufacturer of the globally renowned Taylor bins through to a waste solutions provider that harnesses the power of technology through multiple revolutionary brands.
- has seen us not only evolve with, and respond to, changing industry demands, but also become pioneers within the waste sector.
- will continue to see us create innovative solutions that meet the complex challenges of today whilst developing the waste technology solutions of tomorrow.

Egbert Taylor have developed a suite of solutions that build on the basic foundations of waste collection whilst integrating the latest technology in order to:

- Reduce the operational cost of waste collection by increasing efficiency
- Decrease the amount of movements and carbon emissions attributable to waste collection vehicles
- Minimise health and safety risks associated with the movement of bins and collection vehicles
- Provide municipalities, private companies and waste contractors, with real-time access to the fill-level status of their entire bin fleet
- Enable our customers to have a complete overview of the status of their waste assets
- Produce historical information on bins that enable our customers to plan more efficient approaches to waste collection
- Empower our customers, enabling them to make dynamic decisions in an ever changing environment

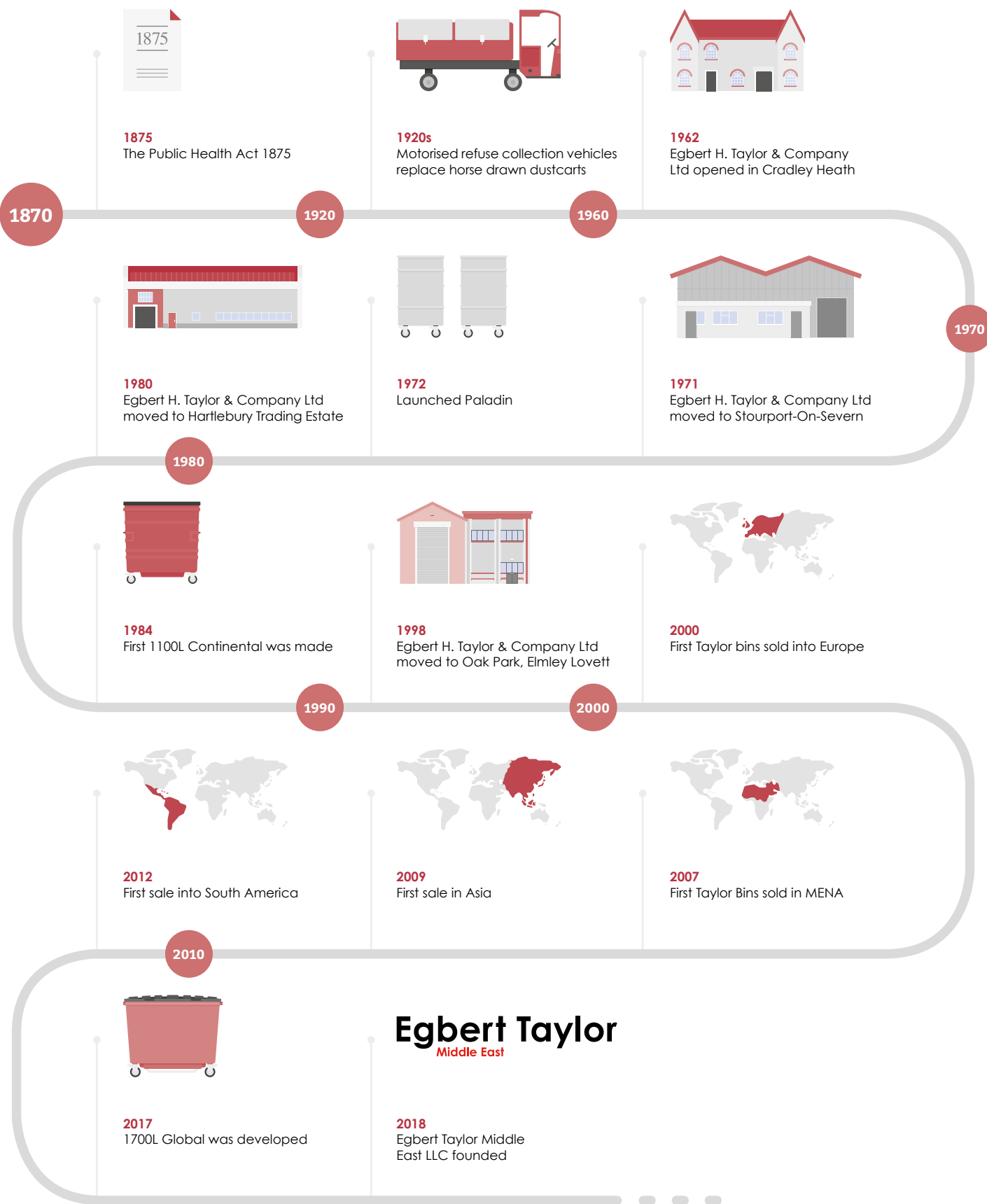


In almost 40 years since joining the Egbert Taylor family I've witnessed the business soar. From being a single-brand manufacturer, generating critical acclaim for its range of galvanized steel Taylor products, to a multi-solution manufacturer and waste solutions provider responsible for producing over 300 containers each and every day.

I've seen huge change during this time, however one thing that has never changed is our ability to manufacture a world-class container that stands the test of time. Even now, I see our iconic 1100L bins coming back to the factory after 25 years of service only to be refurbished and given another lease of life.

Tony Nunn, General Manager

# Egbert Taylor Evolution







BUILT TO LAST, HERE TO STAY.

## Continental™ Range

Built to EN840 standards at our UK manufacturing plant. A rigid hot dip galvanised steel construction with internally welded seams means the Taylor Continental™ range is built to last.



Continental™ 1280L

Continental™ 1100L



Continental™ 820L

Continental™ 770L

Continental™ 700L

Continental™ 660L

Continental™ 500L

### Trade

They not only provide a long and valuable service but offer fire containment and resilience to vandalism.

Lead by our flagship 1100, the Continental™ range also includes the compact 500, 660, 700, 770, 820 and 1280 litre to provide a solution to every waste containment requirement regardless of market sector.



### WEEE

The WEEE Bin has been adapted to cater directly for the collection and recycling of small to medium size electrical goods and to divert small WEEE from residual waste sent to landfill.

This specialist container allows for simple collection and secure storage of unwanted electrical items and has the added benefit of a drop down opening for ease of unloading.



### Recycling

Our recycling range of Continental™ containers encourages the collection of the smallest recyclate up to the bulkiest cardboard collections, with a range of easy to use lids designed to engage the public in good recycling behaviour.

Available in 500, 660, 700, 1100 and 1280 litre capacities.



### FM Solutions

Options include Drop Front & Drop Back - created to help avoid the health and safety risks associated with handballing bagged or bulky waste, often an important requirement within retail and manufacturing environments.

Internal & External Fork Lifting Pockets allow safe and easy movement of containers and more effective waste collection points on site.



### Clinical UN Approved

Taylor offers the largest range of UN approved clinical waste containers.

Our certified in-house testing facility, combined with our exceptional quality of manufacturing, which includes internally welded seams and a galvanized steel body with drop resistant castors creates the ultimate container for clinical waste.



### Chamberlin

Specifically designed 4 wheeled bin for the collection of waste generated in high rise domestic housing available as 720L & 940L. This unique product solves the problem of waste overspill in domestic chutes by fitting perfectly into housings and with the option of recessed handles they are able to fit into even the tightest of spaces while the rigid steel construction helps this waste container contain a fire providing added protection to residents and their property.





BUILT TO LAST, HERE TO STAY.

# Contamination Prevention



## seE-Bin

The Taylor 1100L seE-Bin successfully prevents contamination of waste. The clear side panels allow easy identification of any unsegregated waste, therefore avoiding contamination of whole loads.



## Cage

The mesh side panels of these 1100L recycling containers allow collection crews and users to become instantly aware of any wrongly placed waste, preventing whole loads from becoming contaminated.



## Lid in Lid

Taylor have created the Lid in Lid with waste segregation in mind. Located at the front of the bin and measuring 710mm x 360mm, the Lid in Lid's internal flap is lightweight and easy to open.



## Restrictor Plate

Designed to control specific waste streams, enabling segregations at source. Additional restrictor plates are available in a range of aperture shapes and sizes to control specific waste streams.



## Restrictor Grid

The Restrictor Grid is great for converting a standard trade waste bin into an 'anti contamination' bin.

The grid allows for large quantities of recyclates to filter through whilst preventing general rubbish bags being put in the bin.



## Reverse Lid

Prevent contamination and damage to logos with the Reverse Lid. The Recycling Aperture and logos are placed on the back of the bin ensuring that the logos do not get damaged by RCVs and the locking mechanism is out of reach of the public.



## Duo Bin

Ideal for customers with restricted space for multiple containers but need to source segregate.

Independently lockable lids either side of the Continental Duo Bin allows independent collection by a standard collection vehicle.



## T-Lock

Simply turn the key to unlock the bin. Once emptied, press the lid down and it is locked. Specially developed as a robust alternative to the traditional cam lock and to keep the lid elevated when unlocked, so crews can clearly see that the bin is open.

# Global

**Compliant with EN840, giving customers confidence in both product quality and safety. The Taylor Global 1700L bin features all the key aspects and benefits of our waste container product range whilst offering increased capacity and versatility.**

The Global 1700L is compatible with widely used international refuse collection vehicles designed to handle and empty four wheeled waste containers conforming to EN840 - either by comb bar or DIN point lifting - bringing much needed flexibility to your bin fleets and a bespoke solution for all of your waste management needs.

Available in a wide variety of colours, the smooth swage free frontage allows the application of full sized logos, decals and vinyl wraps which help communicate your desired message to employees and/or members of the public.

## Features

As standard all Global 1700L feature:

- Hot dip galvanised body
- Internally seam welded
- EN840 compliant
- Side handles
- Roto moulded lid
- 2 x swivel castors & 2 x braked swivel castors
- Reinforced Hinge Assembly



## Technical Details

Capacity:	1700 litre
Max. Working Load:	440kg
Empty Weight:	150kg

## Options

Offering more specialist solutions for non-standard waste collection or disposal:

- Hands free foot operation
- Welded comb bar
- Bolt on DIN points
- Side lift RCV trunnions
- Drainage hole and plug
- Bespoke vinyl graphics
- Range of lid colour options
- Range of powder coated colour options



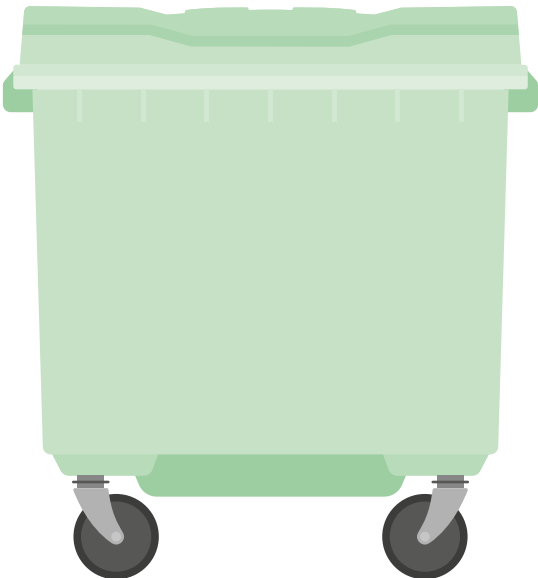
BUILT TO LAST, HERE TO STAY.

# Plastic Bins

The Taylor Plastic Bin range has been created to offer a cheaper alternative to metal bins whilst continuing to offer EN840 compliance.

Lightweight when empty, these bins are great for internal and external use, and are perfect for lighter payloads such as Dry Mixed Recycling.

The plastic construction ensures that the bins are easy to clean and the options of Din points ensures that they can be unloaded by different RCV's.



## Plastic Bin 1100L

The 1100 litre bin, the most popular size, is suitable for an extensive range of waste applications.

### Technical

Capacity: 1100L  
Empty Weight: 50kg

### Features

- EN840 Compliant
- Reinforced Comb Bar (Honey Comb Structure)
- HDPE, UV Stabilized material
- 200mm Plastic centred castors with rubber wheels
- Smooth, easy to clean internal surfaces
- Large print area on body and lid for customer logos
- Additional Reinforcement on all walls
- Lid with lip handle
- Drain plug



## Plastic Bin 770L

The perfect medium sized solution for your waste containment needs in compact footprint.

### Technical

Capacity: 770L  
Empty Weight: 43kg

### Features

- EN840 Compliant
- Reinforced Comb Bar (Honey Comb Structure)
- HDPE, UV Stabilized material
- 200mm Plastic centred castors with rubber wheels
- Smooth, easy to clean internal surfaces
- Large print area on body and lid for customer logos
- Additional Reinforcement on all walls
- Lid with lip handle

### Options

- Recycling Lid Inserts for PET, Paper, Packaging and Glass
- Foot-operated lid opening
- Lid Locking system



## Plastic Bin 660L

The 660 litre offers a deceptively large capacity in a small footprint.

### Technical

Capacity: 660L  
Empty Weight: 40kg

### Features

- EN840 Compliant
- Reinforced Comb Bar (Honey Comb Structure)
- HDPE, UV Stabilized material
- 200mm Plastic centred castors with rubber wheels
- Smooth, easy to clean internal surfaces
- Large print area on body and lid for customer logos
- Additional Reinforcement on all walls
- Lid with lip handle
- Drain plug

- Hot stamping (embossing)
- Various body colours available
- DIN points





BUILT TO LAST, HERE TO STAY.

# Node°

**The Node° system offers a proven way to increase waste and on street recycling participation in locations such as high and low rise flats, where more traditional collection methods such as kerbside collections are not practical.**

Through its distinctive appearance and ingenious design, the Node° mini-recycling centre attracts attention, offering a radical alternative to the conventional look of the standard waste recycling bin to increase recycling.

Part of our Urban Solutions range, the Node°'s modular system means that one to four units (Node 90°, Node 180°, Node 270° and Node 360°) can be configured to give a maximum 3,200 litres of capacity. In a footprint of less than a car parking space!

## Technical

Capacity:	800L - 3200L
Empty Weight:	107kg (per segment)
Safe Lifting Weight:	320kg (per segment)

## Features

- Pre galvanised sheet construction
- Internally seam welded
- EN12574 compliant
- Bolt on FEL pockets
- Rear handles
- Roto moulded double skin lid



## Options

- Range of lid colour options
- Range of powder coated body colours
- Various Lid apertures
- Ground base plate
- Locking options
- Fill level monitoring



# Street II

**With an increasing focus on the appearance of open spaces in parks and new housing developments with a drive to remove unsightly on-street waste and recycling containers, we have created a compact and cost-effective container housing.**

Taylor Street II is perfect for high footfall areas and high density housing where waste can soon fill and then overflow from standard, low capacity recycling and collection bins – both off-putting for the public and time-consuming to tidy up.

Developed in conjunction with Europe's leading urban designers, bold colours and a unique design make the uniquely modular Street II stand out without dominating the landscape.

## Features

- Roto moulded lid



## Options

- Range of logos
- Range of body and lid colours
- Modular System
- Freestanding base plate
- Vermin control brushes
- Range of apertures





BUILT TO LAST, HERE TO STAY.

# Textile Bank

**The Taylor Textile Bank offers a high capacity collection point within the size of a parking space.**

The shute has been developed to prevent theft due to a back plate behind the door of a shute. With a body made of durable steel and externally welded seams. The Taylor Textile Bank keeps the contents dry and ensures long service for years to come.

Combined with the latest fill level technology and access control systems Taylor can provide solutions to significantly improve the operational and management effectiveness.

## Technical

With a range of standard designs available, we can also manufacture Textile Banks to suit your specific requirement; allowing for capacity, foot print and height.

## Features

- High capacity
- Theft prevention shute
- Internally welded seams
- Large logo area for communicating messages
- Small footprint



## Options

- Bespoke vinyl graphics
- Sprayed body colour options
- Chute option
- Fill level monitoring
- Access control



# WasteSafe

**UN Approved Hazardous Substances Container**

The Taylor WasteSafe Container is designed for the storage and transportation of a range of hazardous substances, including: toxic, chemical, medical and contaminated waste.

Ideal for use in Manufacturing, Engineering, Clinical and Pharmaceutical Environments. The WasteSafe Container is specifically designed for the safe and secure storage and transportation of hazardous substances. This includes: toxic, chemical, medical and contaminated waste, paint, lead acid batteries, antifreeze, brake fluids and oils, asbestos, solvents and paraffin etc.

The lid is neoprene rubber sealed, hinged and fitted with springs to assist with opening. This has a lid restraint arm for when the container is open or can be opened completely and held back against the rear face of the body and comes with over the centre lid locks fitted with safety catches and padlocking option.

## Features

- UN Class I approved
- Extremely long life and highly durable
- Completely internally welded and fully galvanised
- Easily moved by fork lift or pallet trucks
- Aerosol Ventilation options available
- Heavy duty dual locking system
- Stackable to minimise storage areas

## Options

- Bespoke vinyl graphics
- Haz plate





**Taylor**

BUILT TO LAST, HERE TO STAY.

# Urban



## Locking Frames

**Secure your bins and prevent unauthorised access by utilising Taylor Bin Frames in your local area.**

Ideal for recycling on the go, high footfall areas, high density housing, parks, bring sites and new housing developments; Taylor 4 Wheeled Bin Frames are aesthetically pleasing and can be easily installed!

Each bin frame has a locking access gate, through which bin crews can easily gain access to the bin. The frame design allows bin crews to efficiently gain access to the bin, empty it and then easily return it.



## Locking Posts

**The ultimate locking system, designed to secure any standard Taylor Continental™ container.**

This system makes the secure storage of containers simple to use by operators with a locking catch mechanism, and renders the container immobile.

Fully tested, the retainer is easy to mount on the floor and built to last from galvanised steel. A specialist variant is also available for 360L and 240L domestic wheelie bins for use in public spaces such as parks and lay-bys.



# Refurbishment

**Egbert Taylor has developed its Refurbishment programme in order to make our customers' bin and container fleet management as cost effective as possible – and all without compromising on quality.**

From fire damage and dents to graffiti and structural damage, our team of skilled engineers then restores each unit, including replacing standard Taylor castors, lids, logos and providing a new, painted finish.

As part of the refurbishment programme, customers can convert their bins to include towing capability and a variety of lid designs and colours.

For a cost effective and sustainable way in which to manage your bin fleet, contact customer services on +44 (0)1299 251333



## With our Refurbishment programme, customers receive:

- A ten point inspection of each bin submitted prior to them being returned
- Peace of mind that each unit has been restored by an in-house team of skilled Taylor engineers
- Reassurance that their newly refurbished units bear all the hallmarks of a genuine Taylor product for up to 40 per cent of the cost of a new container







BUILT TO LAST, HERE TO STAY.

# Spares & Accessories

## Castors

Our range of castors have been rigorously tested to comply with EN840 standards and to ensure they stand up to the stresses and strains of daily operational use; their steel centres and rubber-tyred wheels ensure the smooth running of your containers.

Our complete range includes standard swivel through to heavy duty towing castors and even includes non-marking, suitable for internal environments.



## Locks & Lock accessories

Protect your investment with Taylor's range of replacement locks and lock accessories. If you've changed the usage of your container and need a different locking mechanism or just need new parts then we can help find what you are looking for.



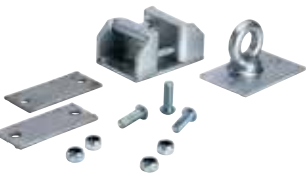
## RFID

Taylor containers are the only steel containers future proof and ready to accept our proprietary TagSafe. Fully EN 14803 compliant and working with all chips, TagSafe holds the RFID chip and prevents the surrounding metal from quenching the RFID signal. We can factory fit TagSafe to all new and refurbished containers.



## Towing

Taylor's unique removable link system for the Continental containers provides a safe, practical answer to all towing requirements. Taylor recommends that any container which is to be towed should be fitted with two fixed castors or two swivel castors complete with directional locks, at one end of the container and that no more than four containers are towed at any one time.



## Lids

Taylor's range of robust double skinned, rotary moulded plastic lids are available in a wide variety of colours to suit your requirements. So whether you want your containers to stand out or blend in with their environment we have a lid colour to suit. From Standard Black Trade Lids to Orange Flap recycling lids we've got it covered, including lids for other types and models of container which are not shown here, such as the specialist steel lid.

### Options

- Range of colours
- Range of types
- Range of lid apertures



## Logo Options

Effective use of a logo alongside an eye catching paint scheme is a key aspect in the design of a Taylor bin, and can convey a powerful brand image or message regarding container use.

Personalise your containers with a complete range of Wrap logos or by adding a bespoke logo, available on most of our products and in two types. Die-cut or Digitally printed.

Our in house design and print facility ensures our logos are printed to our high standards and can meet your exact requirements.







A WINDOW TO THE FUTURE.

# Solar Powered Compacting



Regarded by many as 'the world's most hi-tech bin', Bigbelly's leading smart waste and recycling system has gained a global following and represents the next generation of waste collection in urban environments.

The CLEAN Management Console is the centrepiece of the system, which enables Bigbelly to gather, consolidate and analyse data from its smart collection stations, providing real-time fleet status, alerts and reports.

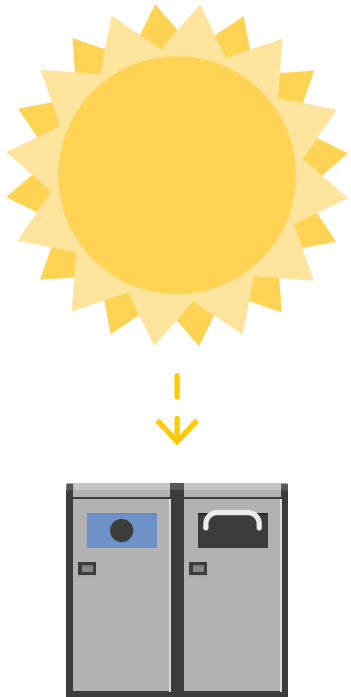
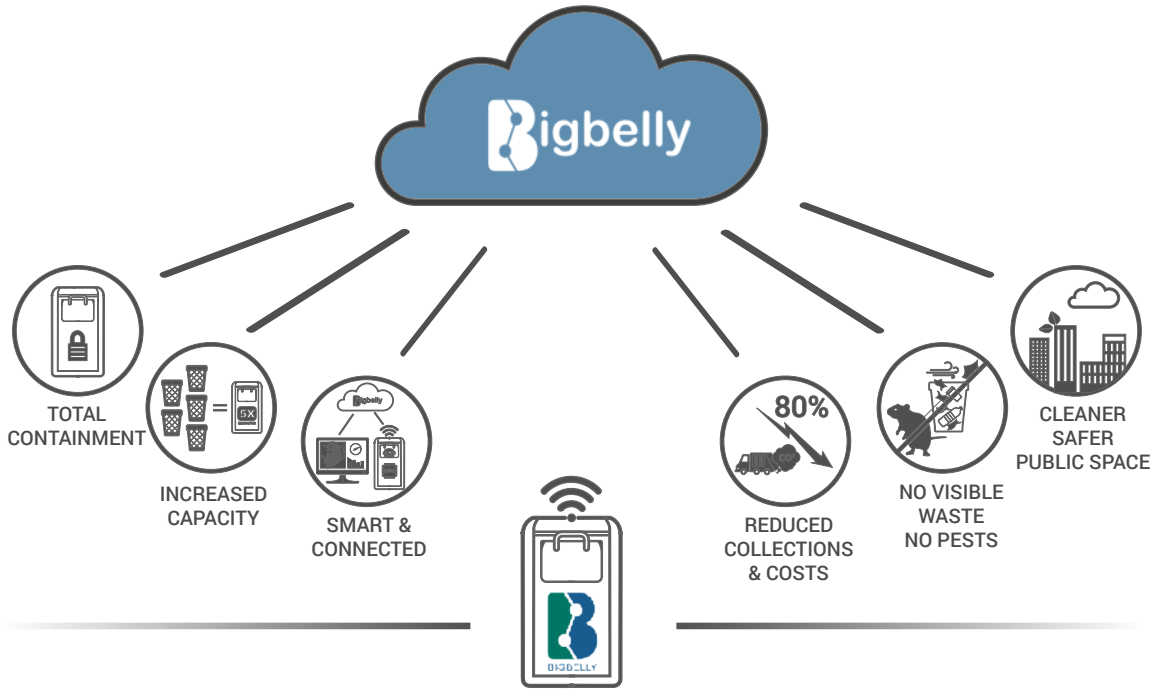
This allows customers to generate a concise, up-to-the-minute view of their entire waste and recycling footprint.

An easy to use cloud-based dashboard provides immediate access to operational status and fullness levels, which enables customers to become more responsive by better planning collection frequencies and establishing the most efficient collection routes.

Bigbelly's CLEAN Mobile App enables customers and waste collection operatives to manage their fleet from any smart phone or tablet. When a station is full and ready to be emptied, it simply lets the collection team know.

## A solar powered system

In addition to efficiencies created through fill-level monitoring and route optimisation, Bigbelly's solar compaction technology increases its collection capacity up to 808 litres when full, further reducing collection frequencies and therefore the operational cost of waste collection, vehicle movements and carbon emissions.



## Highlights & Features

### Interactive Status Maps

At-a-glance visibility into the real-time status of your entire operation: station location, type, fullness level, operational state

### Real-time Status Reports

Operation-wide summaries and detailed per-station statistics

### Efficiency Reports

Historical graphs and charts for tracking operational performance and collection efficiency

### Email Integration

Forward alerts and messages as email

### Daily Collection Digests

Daily collection activity & analysis available through the web dashboard and via email

### Historical Analysis

Track your progress as you start reducing collection frequency & reallocating resources

### System Alerts

Notification & logging of low to critical station events that require servicing - i.e. open door, low battery, communication errors

### Heat Maps

At-a-glance visibility into utilisation and collection trends for planning capacity and optimising station placement

### Station Management

Remote station monitoring & maintenance tools including tracking station locations via GPS, manage system groups/collection routes and CLEAN users, etc.

# Monitoring Hub

In a world bound by limited resources, netBin has established a global reputation for delivering efficiency gains through transforming everyday waste assets into intelligent assets.

From litterbins and textile banks to recycling centres and skips, netBin's sensor technology has revolutionised waste collection and storage by giving each container a voice.



## Rethinking waste collection in a modern world

With netBin, all Egbert Taylor customers can convert their traditional bins into intelligent bins in a matter of minutes, creating bin fleets that support:

- Fill level monitoring. No more overflowing bins
- Lift logging. Track exactly when bins are emptied and how full they are at the point of being lifted
- Route planning and scheduling. Only empty bins that need emptying
- Bin behaviour monitoring. Quickly respond to anomalies such as misplaced, faulty or overturned containers
- Waste mapping. Identify trends and peak usage times - by fleet or by individual bin
- Reactive management. Receive real-time updates on issues via a smartphone, tablet or computer
- Monitor staff performance. Get more from your team through live data feeds and tracking
- Analyse historical behaviour. Use the analysis tool to observe fill rate behaviour over time and check for trends. Underused, rapid fill and overflowing bins are automatically grouped and listed
- High temperature warnings. Text alerts and emails sent when units' temperature increases or in the event of a fire

## Intelligent collections, cleaner streets

Intelligent management reduces the operational cost of waste collection. With Egbert Taylor's waste technology platform our customers can:

- **Be smarter.** Only empty bins when they need emptying and reinvest the time and cost saved into other frontline services
- **Be greener.** Boost environmental performance by making fewer waste collections and generating less carbon emissions
- **Be cleaner.** No more overflowing bins, no more risk of vermin and less risk of smell
- **Be safer.** Limit heavy vehicle movements to only those necessary

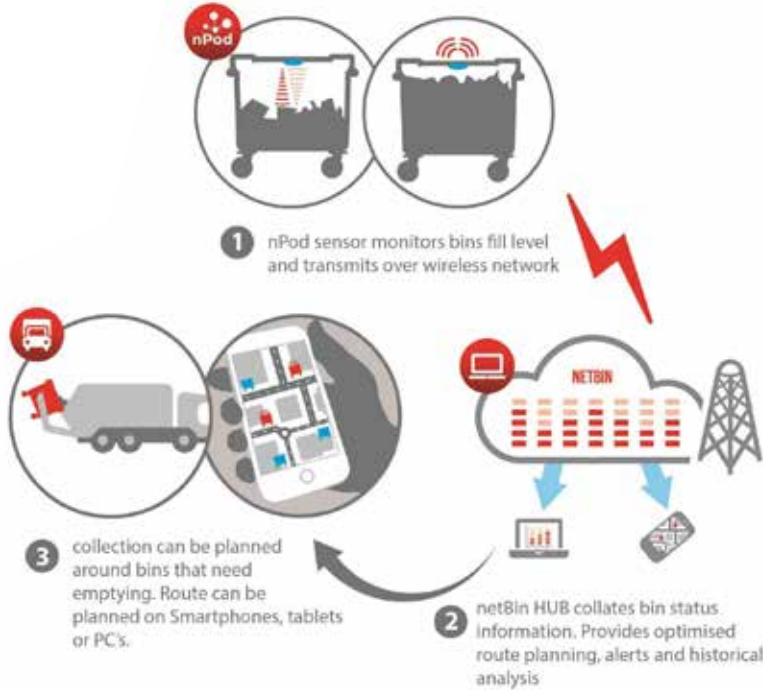


# Fill Level Monitoring

## Benefits of using the netBin system

Reduce both cost and collection times with dynamic routing based on reported fill levels. Automatic monitoring of bins provides timely warnings when they are full, permitting intelligent route planning for collections ensuring no visit is wasted and unsightly overflowing bins are a thing of the past.

netBin is not just about waste collection - the nPod sensors can be retrofitted to almost any container to monitor its status, whether you need to know about how full it is or sending an alert if its on fire, moved or tipped over.



### Reduce Costs

- Huge fuel savings
- Reduce fleet size
- Remove poorly utilised bins
- Reduced wear and servicing on collections vehicles
- Combat theft of bins and contents
- Fully utilise your workforce

### Operate Efficiently

- Only empty bins that need emptying
- Optimised collection routes
- Avoid ugly overflowing bins
- Increase capacity in rapid fill areas
- Use netBin API to feed your existing software package with valuable fill level data

### Monitor & Report

- Analyse existing collection routes against actual fill levels
- Monitor staff performance
- Gather evidence for new collection improvement schemes
- Identify trends in bin behaviour using Excel too ANALYSER
- API Interface to big data







# Access Control System

**Combat theft of textiles by retro fitting the secure nLok system which identifies and autonomously grants access to authorised collectors only.**

Control and manage 1000s of electronically secured textile banks from one central management platform.

- Highly secure, innovative authenticated and encrypted access control system. Many other security features built into the product
- Compatible with electrically operated locks
- System can be updated without needing onsite visits to banks
- Operates in poor signal areas, cellular phone system not required for banks to be opened
- All bank access centrally logged with smartphone user details, unauthorised access attempts recorded
- Automatically issued email and SMS alerts on key events to minimise management overhead monitoring the system
- Minimal Collector training required, no key or button pressing required by Collector just having the smartphone on them is enough. Only connecting the power pack to activate the electrical lock is required
- Fast fitting to existing banks, no external bolts required for installation



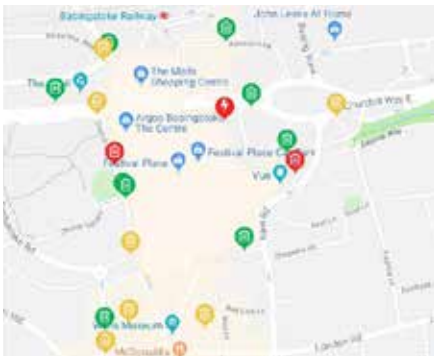
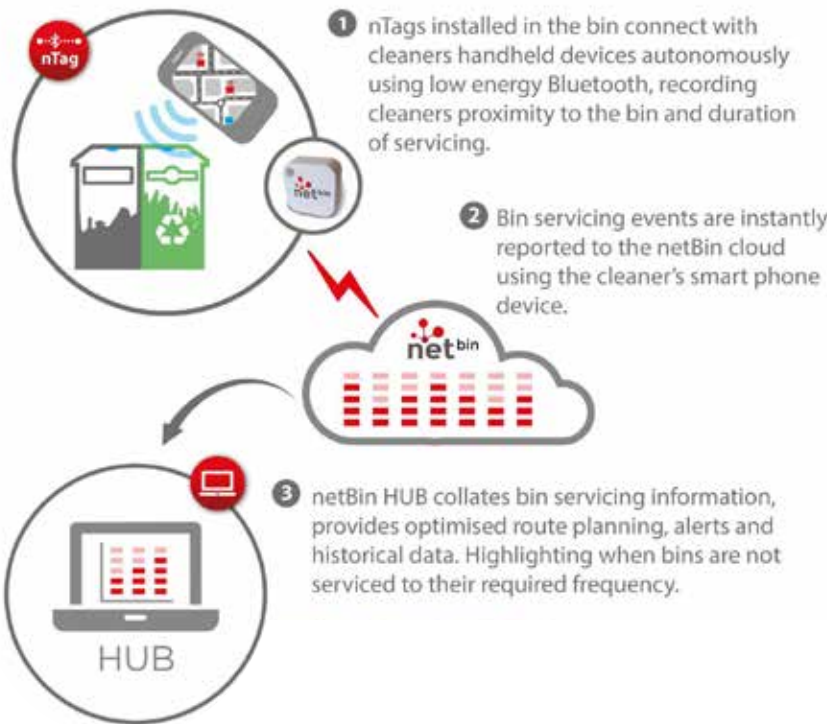
HIGHLY SECURE ACCESS SYSTEM.

# Proximity Monitoring

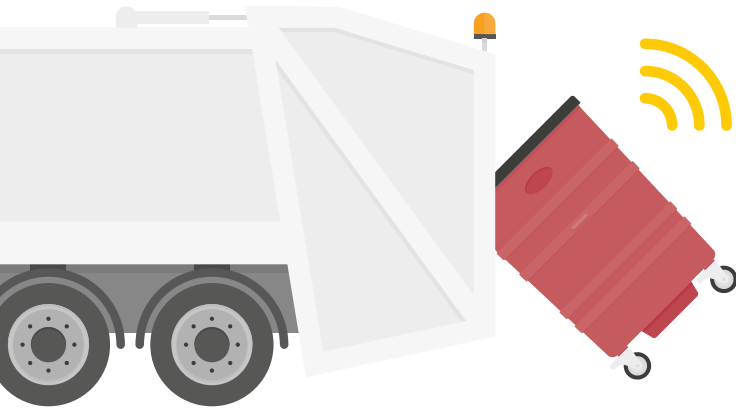
**nTag enables you to confirm the bins are being visited by cleaners at the required frequency.**

A real time feed of collections is displayed through our web based bin management system netBin HUB.

- Reports bin collections in real-time
- nTag automatically connects with the cleaners smart phone when they arrive at the bin
- netBin nTag app supplied for installation in an android based smart phone
- netBin HUB alerts Managers when bins have not been visited at the required frequency
- Simple installation in discreet location
- No training or maintenance of the nTag required
- Low cost solution for deployment across entire bin networks



- = Recently serviced
- = Needs attention
- = Critical



## A new era of waste collection has arrived

**The next generation of waste collection is here.**

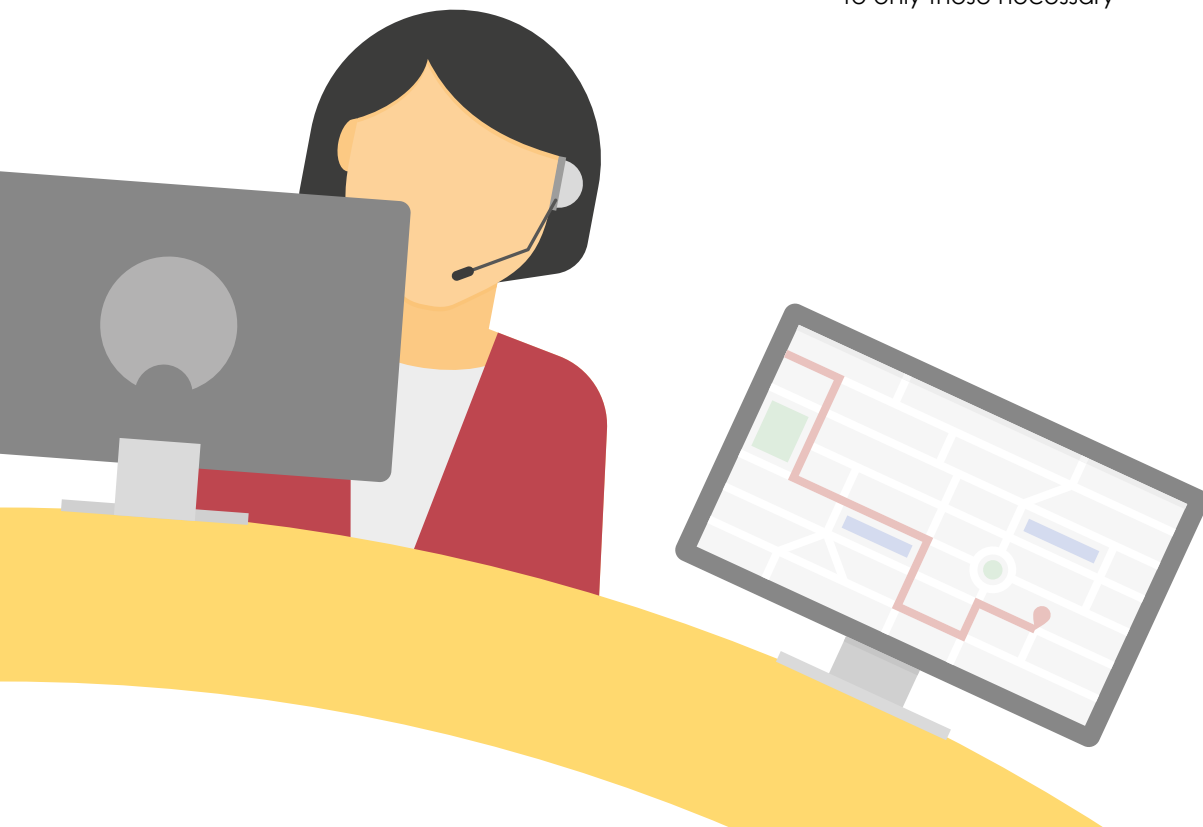
Technological advancement and its integration with the waste sector means that local governments and private sector companies can now be more efficient when it comes to waste collections.

### Forewarned is forearmed

Egbert Taylor provides the products in which to containerise waste and the technological framework that enables customers to make smarter collections.

Through fill-level monitoring and dynamic route management Egbert Taylor's customers and partners now have 24/7 access to real-time data relating to their entire waste bin fleet.

Having real-time visibility of an entire fleet of bins enables collections to be made only when necessary.



### Intelligent collections. Cleaner streets.

**Intelligent management reduces the operational cost of waste collection. With Egbert Taylor's waste technology platform our customers can:**

- **Be smarter.** Only empty bins when they need emptying and reinvest the time and cost saved into other frontline services
- **Be greener.** Boost environmental performance by making fewer waste collections and generating less carbon emissions
- **Be cleaner.** No more overfull bins, no more risk of vermin
- **Be safer.** Limit heavy vehicle movements to only those necessary

## Case Study

### 97% reduction in collections



**We delivered a big change for Rugby Borough Council whilst future-proofing its waste collection strategy.**

Rugby Borough Council attracts thousands of overseas visitors, particularly during times of major rugby tournaments and competitions.

Prior to the Rugby World Cup, the council conducted a review of its streetscene and concluded that:

- Traditional bins would fail to manage the waste generated by the predicted influx of 40,000 people
- Town centre bins in different states of disrepair misrepresented Rugby Borough Council's progressive attitude and values

"For a long time now we've wanted to do things differently, yet couldn't find the solution that could achieve what we needed without going over budget. Now that we've found Bigbelly, not only can we meet our own targets in tandem with improving the urban realm, but also save precious council resource in the process. Not too long ago we'd carry out regular waste collections, regardless of whether the bins needed emptying or not, simply because we had a schedule to adhere to. These days, we're notified when collections need to be made and can clearly see when bins don't need emptying just by looking at a smart device or office computer."

**Head of Environment and Public Realm at Rugby Borough Council**

### The outcome

In only 12 months Rugby Borough Council has:

- Replaced its traditional bins with Bigbelly
- Reduced manual waste collections
- Achieved a 97% reduction in collections, waste collection lorry miles and the associated carbon emissions
- Increased operational efficiency by replacing the annual operational cost of servicing bin
- Eliminated overfull bins from public spaces and children's play areas
- Reallocated the resource saved through minimising waste collections to other street cleansing services.





# Logistics

## Bound by heritage, driven by innovation, delivered by experience

Egbert Taylor has been delivering in the UK since day one. In this time, we have developed strong relationships with a network of partners who specialise in delivering product, on time, across the globe.

We understand that a large portion of costs can be due to the shipping of a product. Therefore, we have ensured that the shipping of our products are as cost effective as possible by:

- Efficiency in stacking densities
- Product design to maximize transportation
- Find assembly at the customer destination
- Investment in vehicles to increase capacity by over 80%



# Why Taylor?

In the Waste industry, there are 9 times more fatal accidents and 4 times more injuries than the UK average. Therefore, we are committed to ensuring all of our 4 Wheeled and 2 Wheeled Bins are EN840 compliant for the safety of Waste workers and the general public.

### Comb Bar

Constructed so that it fits on an approved, compatible lifting device; it must automatically locate and lock safely into the lifting device during the lifting operation. EN840 parts 2 & 5.



2mm thick rolled steel section with step profile for safe and efficient integration on vehicle lifts (recognised design). Manufactured from single piece of folded steel with gussets for strength. Compliant with EN840 part 2 which works with the EN1501 RCV to ensure that compliant vehicles and bins can be safely used together.



Inferior material found on competitor bins are prone to premature fatigue of the lifting points. The comb bar is the most important part of a bin as it is responsible for lifting the weight of a full bin in the air.

Any failures could result in serious injury or fatalities.

### Castors

Castors must pass five vigorous EN840 tests (covering pull, brake and kerb impact tests) to be accredited.



Our metal castors have evolved over years of testing. Working alongside our suppliers to ensure that all components work in harmony with one another ensuring they are EN840 compliant. EN840 part 5. We can provide all individual test reports upon request.



Inferior castors will not feature the low rolling resistance which contributes to injury. The components will fail prematurely rendering the container inoperable.

### Handles

Handles must conform to EN840 clearance and space restriction to ensure safety of the operator when moving the bin. EN840 part 6.



All Taylor handles comply with dimensions laid out by EN840. Clearance, form and layout of handles are carefully considered to ensure safety and ease of operating. EN840 parts 2, 5 & 6.



Non compliant handles are made of material that is substandard, handles do not provide clearance of the handle for use. Many handles aren't ergonomically designed therefore can lead to further injury.

### Construction

Designed to retain integrity of the bin and add rigidity to the overall shape.



Patented tubular 20mm top frame. Pressing in front steel panel to add strength to prevent distortion.



Other manufacturers use 16mm top frame. Distortion of the top frame can affect integrity of the comb lifting bar.



# Setting the Standards

EN840 is the recognised European Standard for mobile waste containers; both two and four wheeled, of varying capacities and specifications. Containers from 500 to 1300 litres conform to 2, 5 & 6.

**Requirements for EN840 in relation to 4-wheeled bins include but are not limited to:**



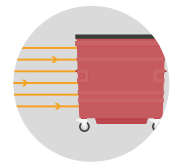
## Bins Must be Compatible with Lifting Devices

All Taylor bins are designed to be compatible with EN1501-5 compliant lifting devices. Bins are lifted with their maximum load 100 times and tested for signs of deformation and safe integration.



## Castors Must Withstand a Third of Maximum Weight

Taylor has developed its own specification for castors which exceeds the requirements of EN840; using high quality materials and construction technique, they are some of the strongest castors available.



## Containers Must Pass the 10 Physical Tests Specified Within EN840

Taylor operates the UK's only fully certified R&D facility, its test centre is used for EN840 accreditation purposes.



## Lifting Handles

Lifting handles must be strong enough to avoid damage caused by collisions or from disconnecting when used to lift the container up a kerb.



## The 10 Physical Tests Include:

### General

Meets dimensional and volume requirements as specified in EN840 Pt2 - setting location of critical lifting features, handles, etc to ensure safe operation and integration with lifting device which meet EN1501.

### 1. Impact Test by Ball Drop

Must withstand impact from 5kg weight from 0.8m height.

### 2. Impacts on an Inclined Plane + Kerb Travel (Run) Impact

Impact testing various sides of the test loaded container at 1.85m/s against a solid wall.

### 3. Kerb Travel (Falls) Drop

Test loaded container lifted to kerb height and dropped a minimum of 1000 times.

### 4. Stability Test

Stability of test loaded container is tested by parking in three positions on 10 degree slope and castor brakes applied. Container must not tip or slide down the slope.

### 5. Pulling and Rolling Resistance

Maximum 300Nm pulling force to begin moving test load container, 285Nm to pull once moving a minimum of 3m.

### 6. Wheels Testing

Radial castor test 20km rolling distance at minimum 3.3km/h.

### 7. Lifting-tilting Test

Test loaded container lifted for a minimum of 100 lifting cycles on EN1501 certified lifting equipment.

### 8. Kerb Handle Strength Test

Test loaded container handle lifted a minimum of 50mm high, 5 times per minute for minimum of 1000 cycles.

### 9. Volume Testing

Double-tank method used to confirm capacity is within 5% tolerance specified in standard.

### 10. Brake Testing

Test loaded container is tested by parking in a lateral position on 10 degree slope and castor brakes applied.

For over five decades we've worked extremely hard to design & manufacture containers that meet the needs of our customers across the world. Our research and development team continues to invest heavily in on-going product development, improvement and innovation.

In fact, our own in-house testing facility, which enables us to guarantee that all our 4 wheeled and 2 wheeled bins are EN840 compliant, completely differentiates us from any other UK-based manufacturer of galvanised steel containers.

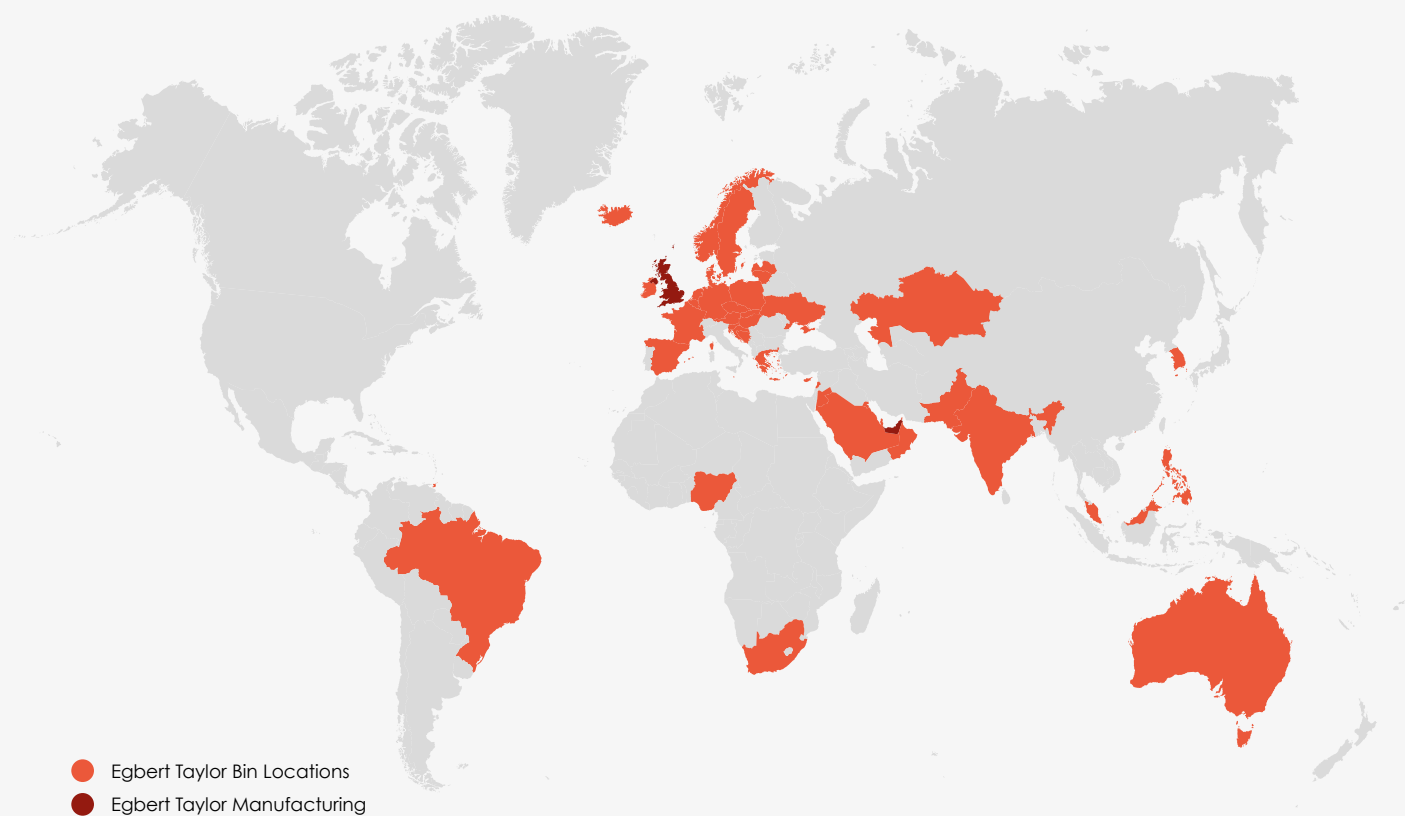
Egbert Taylor's expertise and technical knowledge has enabled us to carve a reputation for 'quality-without-compromise' and it's this message that is now attracting customers from around the world, most of which place quality above everything else.

Research and development has always been and will continue to be the lifeblood of Egbert Taylor, not just in the UK but also internationally.

**Jamie Roberts, Technical Engineering Manager**







#### United Kingdom

e: [info@egberttaylor.com](mailto:info@egberttaylor.com)



#### Middle East

e: [info@egberttaylor.ae](mailto:info@egberttaylor.ae)



#### Europe

e: [europe@egberttaylor.com](mailto:europe@egberttaylor.com)



#### International

e: [international@egberttaylor.com](mailto:international@egberttaylor.com)

## Egbert Taylor Holdings

Egbert H. Taylor & Co Ltd  
 Oak Park,  
 Ryelands Lane,  
 Elmley Lovett,  
 Droitwich,  
 WR9 0QZ.  
 United Kingdom

t: +44 (0)1299 251 333  
 e: [info@egberttaylor.com](mailto:info@egberttaylor.com)  
 w: [egberttaylor.com](http://egberttaylor.com)

UK Distribution:



International Distribution:



\* Manufactured in the UK